

Hi-MO X10 Scientist

LR7-60HVH

535~560M



More flexible installation methods, suitable for short frame clamps mounting with high mechanical loading



High efficiency with better energy generation performance



N-type TaiRay wafer & HPBC 2.0 innovative technology enhances high product reliability



**Monofacial
Power Generation**

15Y Product Warranty | **30Y** Performance Warranty

Complete System and Product Certifications

IEC 61215, IEC 61730

IEC62941: Guideline for module design qualification and type approval

ISO9001: Quality Management System

ISO14001: Environment Management System

ISO45001: Occupational Health and Safety



**THE SMARTER
AWARD**



24.82%

MAX MODULE
EFFICIENCY

1%

FIRST YEAR
POWER DEGRADATION

0.35%

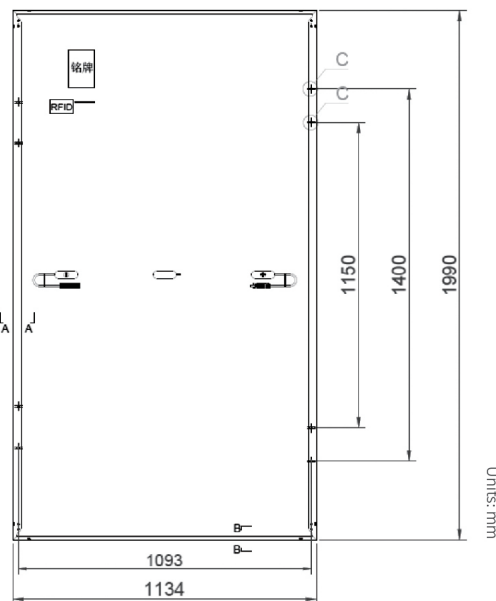
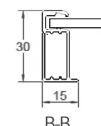
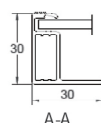
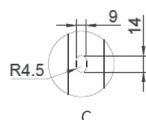
YEAR 2-30
POWER DEGRADATION

-0.26%/°C

BETTER TEMPERATUR
COEFFICIENT



Tolerance:
Length: $\pm 2\text{mm}$
Width: $\pm 2\text{mm}$



Units: mm

Mechanical Parameters

Cell Orientation	120 (6×20)
Junction Box	IP68, three diodes
Output Cable	4mm ² ; +400/-200mm/±1400mm length can be customized
Glass	Single glass 3.2mm coated tempered glass
Frame	Anodized aluminum alloy frame
Weight	24.5 kg
Dimension	1990×1134×30mm
Packaging	36pcs per pallet / 180pcs per 20' GP / 792pcs per 40' HC

Remark: 17.5m trucks are rated at 30t load. Actual loading quantity is subject to vehicle specs.

Electrical Characteristics

-STC: Irradiance 1000W/m², Cell Temperature 25°C, AM1.5 (Test uncertainty for P_{max}: ±3%)

Module Type	LR7-60HVH-535M	LR7-60HVH-540M	LR7-60HVH-545M	LR7-60HVH-550M	LR7-60HVH-555M	LR7-60HVH-560M
Testing Condition	STC	STC	STC	STC	STC	STC
Maximum Power (P _{max} /W)	535	540	545	550	555	560
Open Circuit Voltage (V _{oc} /V)	44.78	44.88	44.98	45.08	45.18	45.28
Short Circuit Current (I _{sc} /A)	15.15	15.25	15.35	15.45	15.55	15.65
Voltage at Maximum Power (V _{mp} /V)	37.01	37.11	37.21	37.31	37.41	37.51
Current at Maximum Power (I _{mp} /A)	14.46	14.55	14.65	14.74	14.84	14.93
Module Efficiency (%)	23.71	23.93	24.15	24.37	24.59	24.82

Operating Parameters

Module [T98] Max	70°C
Operational Temperature	-40°C ~ +85°C
Power Output Tolerance	0~3%
Maximum System Voltage	DC1500V (IEC)
Maximum Series Fuse Rating	25A
Nominal Operating Cell Temperature	45±2°C
Protection Class	Class II
Fire Rating	IEC Class C

Mechanical Loading

Min Designed Mechanical Load	1600Pa/1600Pa
Front Side Maximum Static Loading	5400Pa
Rear Side Maximum Static Loading	2400Pa
Hailstone Test	25mm Hailstone at the speed of 23m/s

Temperature Ratings (STC)

Temperature Coefficient of I _{sc}	+0.050%/°C
Temperature Coefficient of V _{oc}	-0.200%/°C
Temperature Coefficient of P _{max}	-0.260%/°C